

BORDER SECURITY MONITORING

# PASSIVE RF SURVEILLANCE



## Border crossing (North Macedonia) simulation

The protection of homeland territory requires borderline security, denying illegal entry of people and goods, as well as countering terrorist activity and movements. Smart protection leveraging RF technology can greatly assist Border Police and Border Guard Authorities.

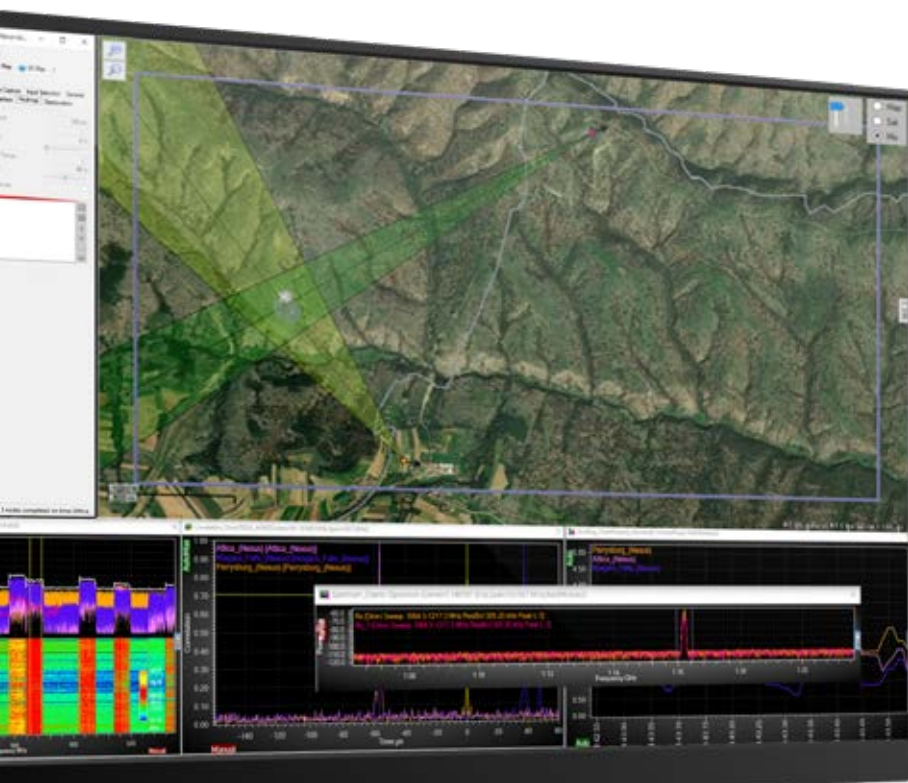
The border between North Macedonia and Serbia is a hotspot for illegal crossing into Europe. Passive RF surveillance can monitor, geolocate and capture PMR, mobile and drone signals for North Macedonia Border Control, see across into the Serbian side of the border (without being seen) and open up shared intelligence possibilities.

### ANGLE OF ARRIVAL (AOA) SIMULATED ENVIRONMENT:

Using RFeye SITE v1.51.2, we show how one potential border path can be monitored 24/7/365.

### AT A GLANCE:

- Hostile neighbours
- Port protection
- Illegal migrants
- Smuggling
- Transnational criminals
- Coastal surveillance
- Multi-domain



Two RFeye Array's have been deployed on 25m tower (masts) based on geometry. The simulation shows RF Analysis with SOI running at 400MHz with a roaming height of up to 2 metres. This can be changed.

- Line of bearing
- AOA detection for PMR and other targets

## EQUIPMENT USED



**RFeye® Receiver (Node)**  
High-performance spectrum sensor  
(receive / record) to 40GHz



**RFeye® Site**  
Real-time spectrum monitoring  
& geolocation toolkit



**RFeye® Mission Manager**  
Automated spectrum monitoring  
& mission management

CRFS is an RF technology specialist for the defense industry, national security agencies, and systems integration partners. We provide advanced capabilities for real-time spectrum monitoring, situational awareness, and electronic warfare support to help our customers understand and exploit the electromagnetic environment.

